

TREND BOOK

MEXICO COLLECTION
2020-21

PREMIUM LAMINATES





TREN D BOOK

SOBRE NOSOTROS

MEXICO COLLECTION 2020-21

TOTAL MARKET es una empresa mexicana especializada en la comercialización al por mayor y por menor de productos para la fabricación y mantenimiento de mobiliario. Total Market se ha convertido en proveedor estratégico para la ejecución de proyectos arquitectónicos y diseño de espacios.

Inició operaciones en el año 1989 en la Ciudad de México, distribuyendo las marcas más prestigiadas; y asimismo en los últimos años importando los mejores productos bajo su propia marca, alcanzando los precios más competitivos con calidad excepcional.

Total Market en alianza con AMULYA MICA, trae la colección elite de laminados decorativos 0.8mm con garantía de 7 años.

AMULYA MICA the fastest growing Laminates brands of India is one of the premier products of Purbanchal Laminates Pvt. Ltd, an ISO:9001, 14001 & OHSAS:18001 & FSC certified & IGBC membership company.

The Government. of India has awarded Purbanchal Laminates Pvt. Ltd. as "Export House status" in recognition of its achievement in the international trade.



- Solidos Page 1 to 2
- Alto Brillo Page 3 to 6
- Maderas Page 7 to 18
- Maracaibo Page 18
- Stone Page 19 to 22
- Metal Art Page 23
- Touch Page 23 to 30

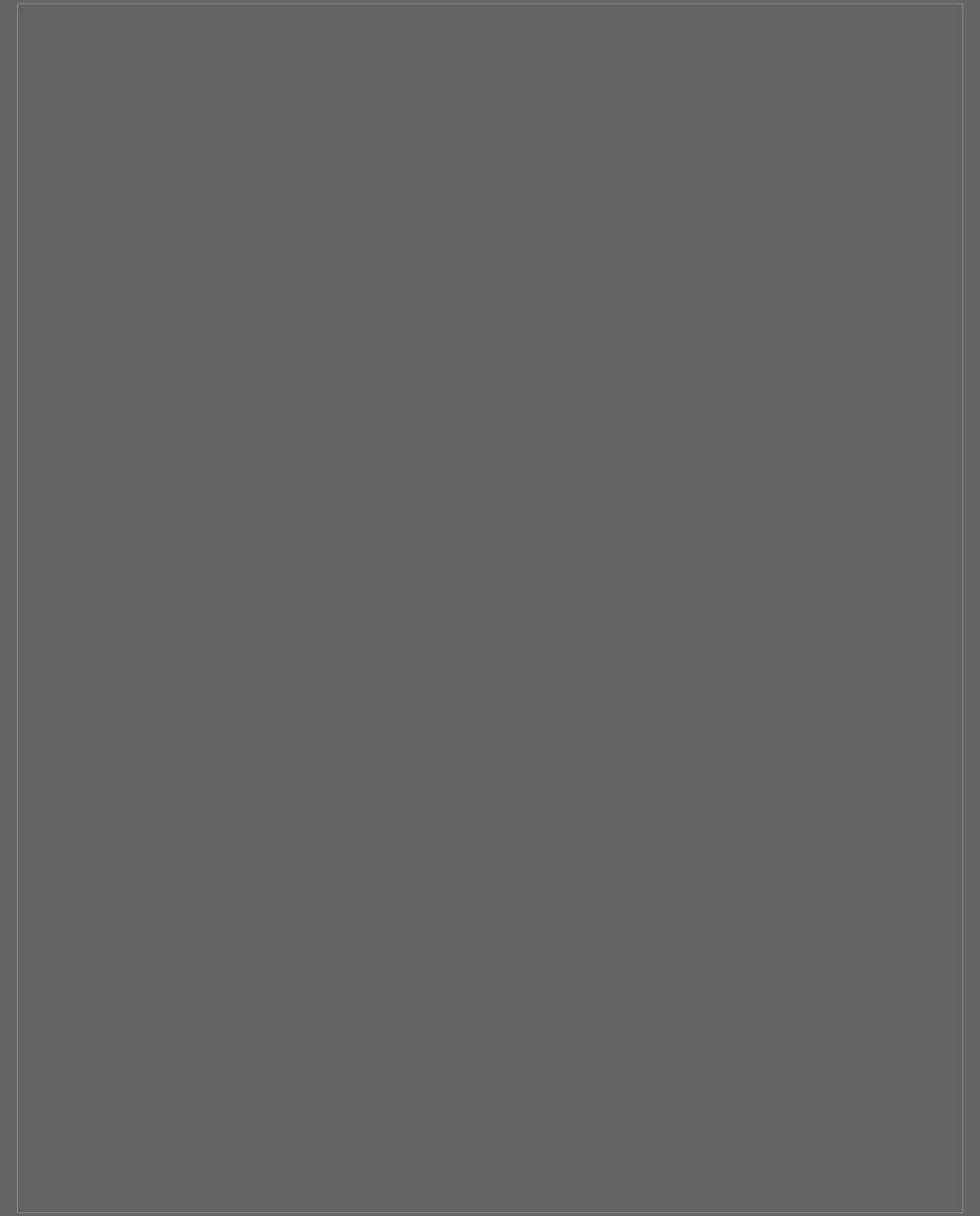
Synchronic
Plus + Page 31 to 36



TREN
D BOOK



**CON
TENI
DO**



• **S
O
L
I
D
O
S**



• **MADERAS**

• **ALTO
BRILLO**

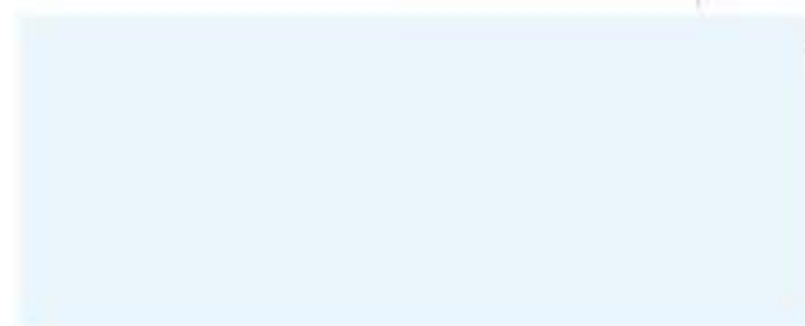


**TR
EN
D**
BO
OK

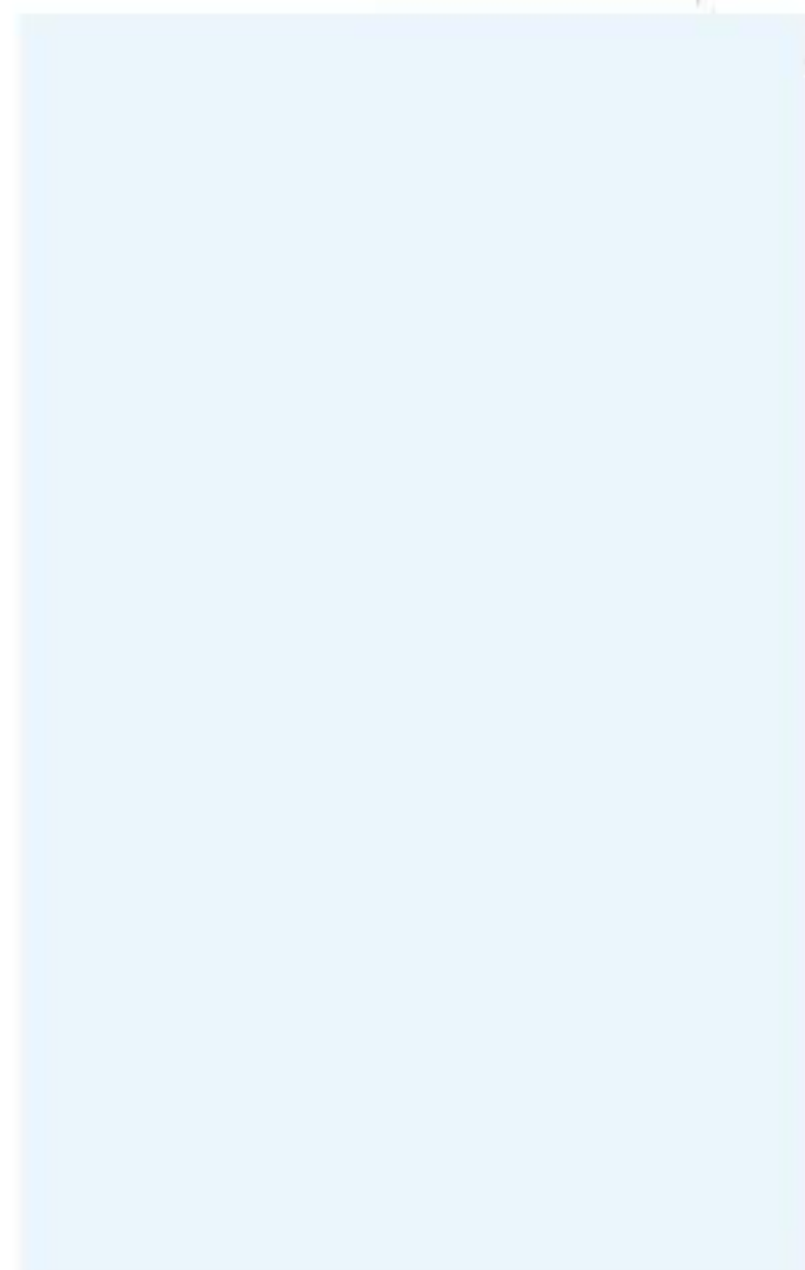
MARACAIBO

Solidos

1001 SF SNOW WHITE



1001 HGF SNOW WHITE



1999 SF MIDNIGHT BLACK



1999 HGF MIDNIGHT BLACK



1502 SF TOMATO RED



1502 HGF TOMATO RED





3290 HGF NATURAL BARK - III



3332 HGF SELVAGAMO - II



3331 HGF SELVAGAMO - I



TREND
BOOK



03

04



Alto Brillo



3294 HGF BRAZILIAN EBONY



3341 HGF MAHAGONY CROTCH - I





TREND BOOK

3207 SF AFRICAN AFFROMOSIA



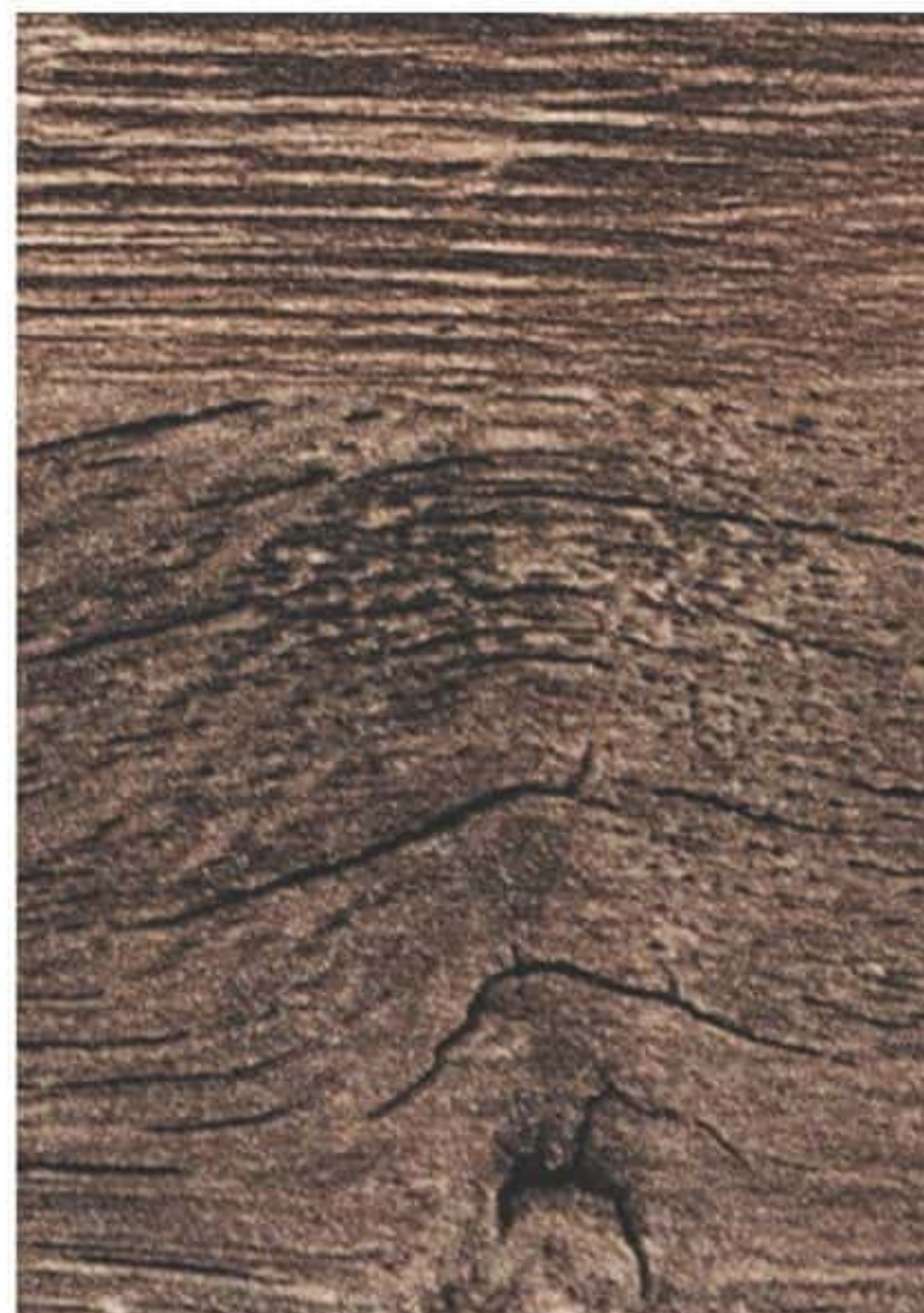
3206 SF MALAYSIAN TALLI



3230 SF MOTTLED TEAK WOOD



3201 SF YUKON OAK





3292 SF BLEACHED ASH



3047 SF ARGENTINE CAPISCO - III



3045 SF ARGENTINE CAPISCO - II



3040 SF NATURAL HICKORY



3039 SF DARK HICKORY



3312 SF MOROCCAN WOOD - SLATE



3240 SF ROCKPILE - II



3286 SF SHINGLE OAK - II

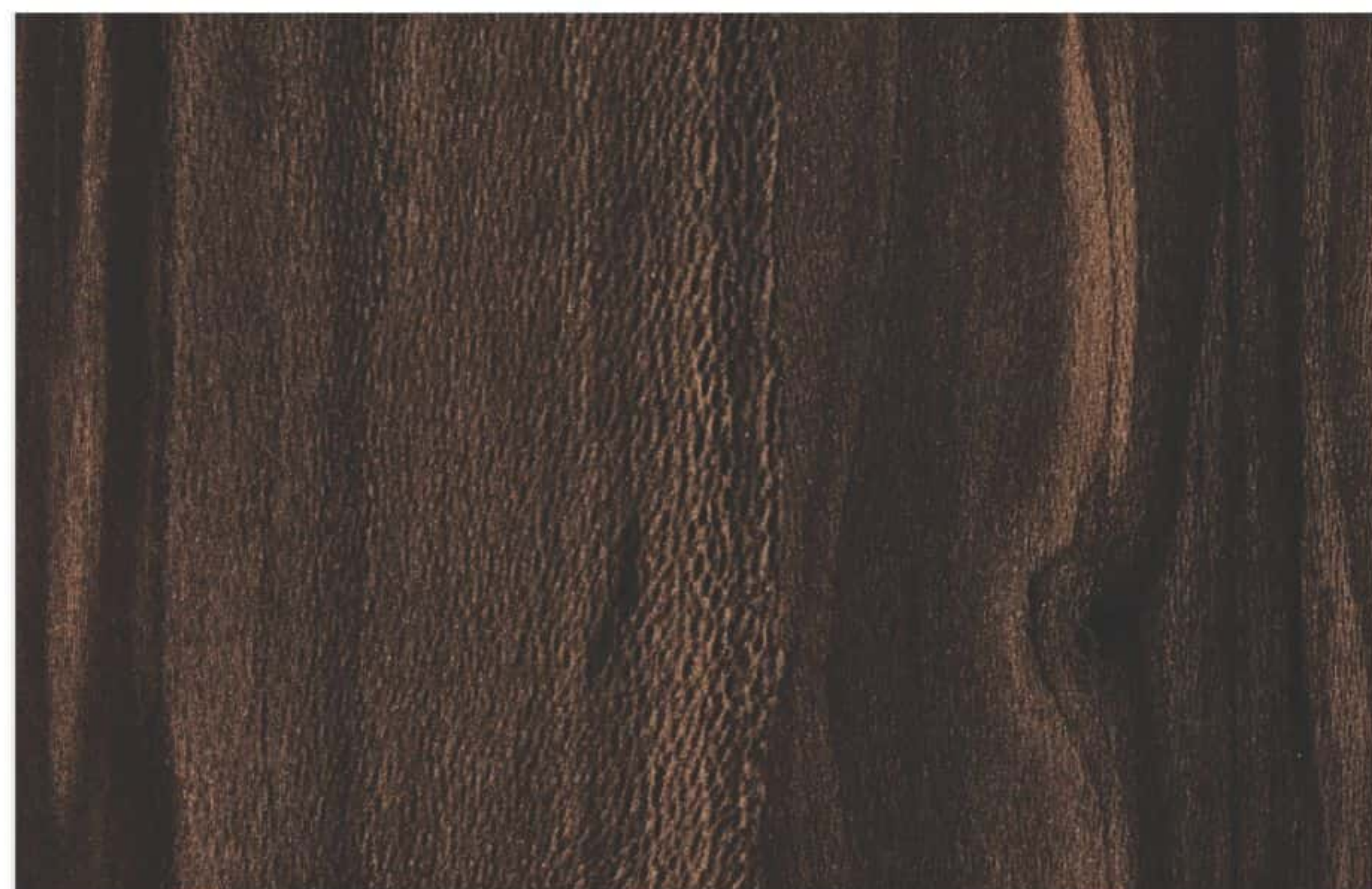




3229 SF TYROL PINE



3311 SF AFRICAN SAUVAGE - DARK



TR
EN
D BO
OK

3321 SF NOCE DAVINCI - II



3242 SF NASH OAK - I



3243 SF NASH OAK - II



3027 SF ARIZONA OAK DARK



3028 SF ARIZONA OAK LIGHT



9010 SF WENGE



5106 SF GERMAN PINE





Maderas

←←←←

4007 SF ROYAL PEAR



2004 SF CEDAR BEECH



2179 SF IRONSTONE OAK - GREY



2196 SF FLOWERY WENGE BLACK



Maracaibo

3034 SD MARACAIBO



TR
EN
D BOOK



STONE

Stone



3335 SN KOMABA DARK



3222 SN ROSE GOLD



3220 SN BRONZE



Stone



3272 SN TANZANITE



3249 SN APLITE - II



TREN
D BOOK

3248 SN APLITE - I



3250 SN APLITE - III

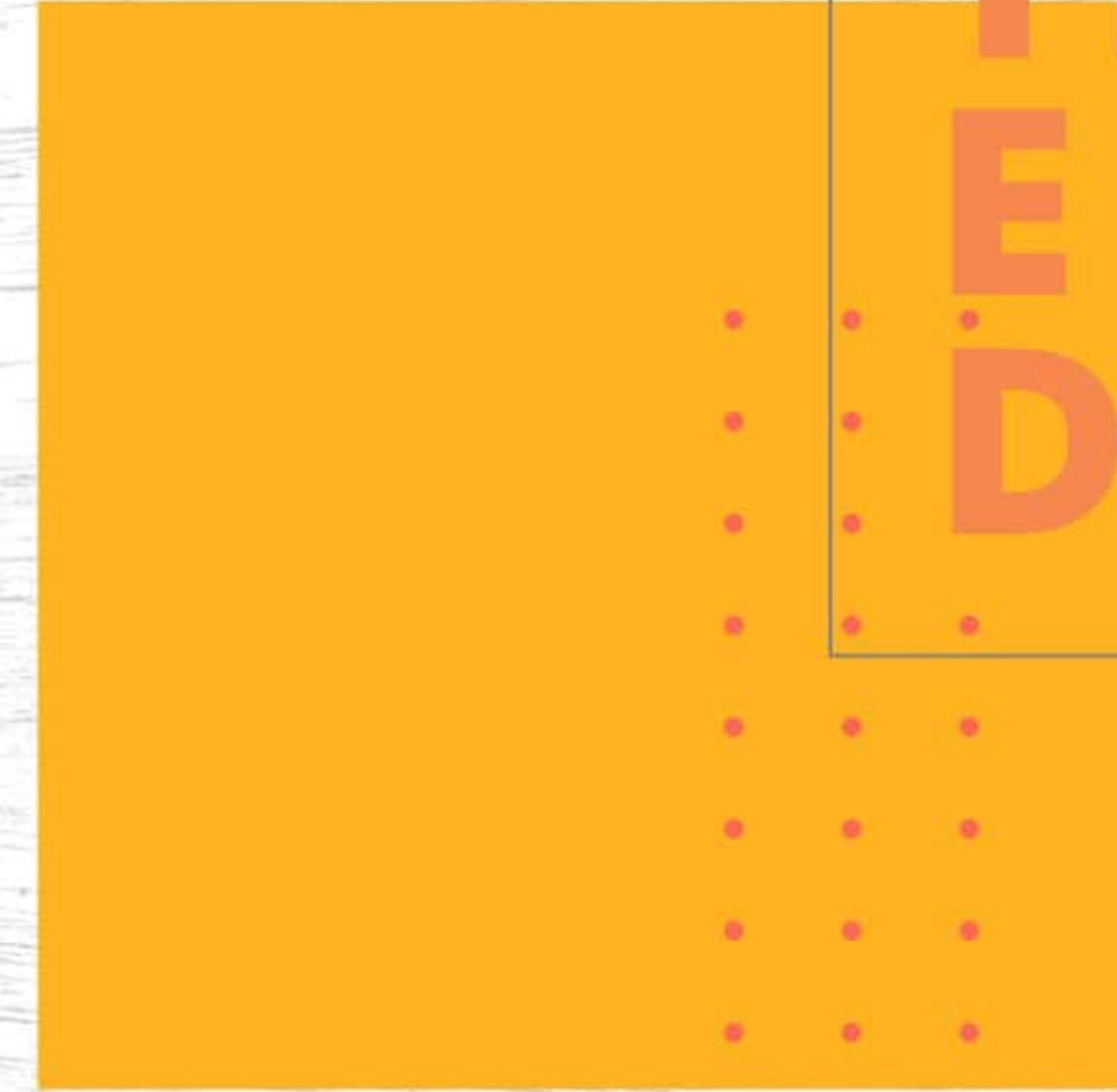




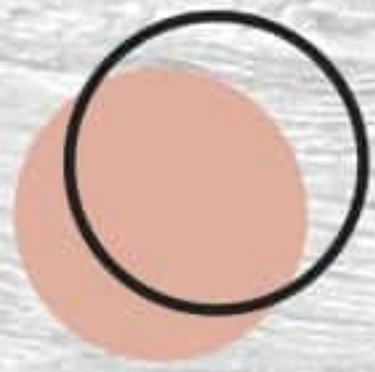
● Touch



● Lamin Art



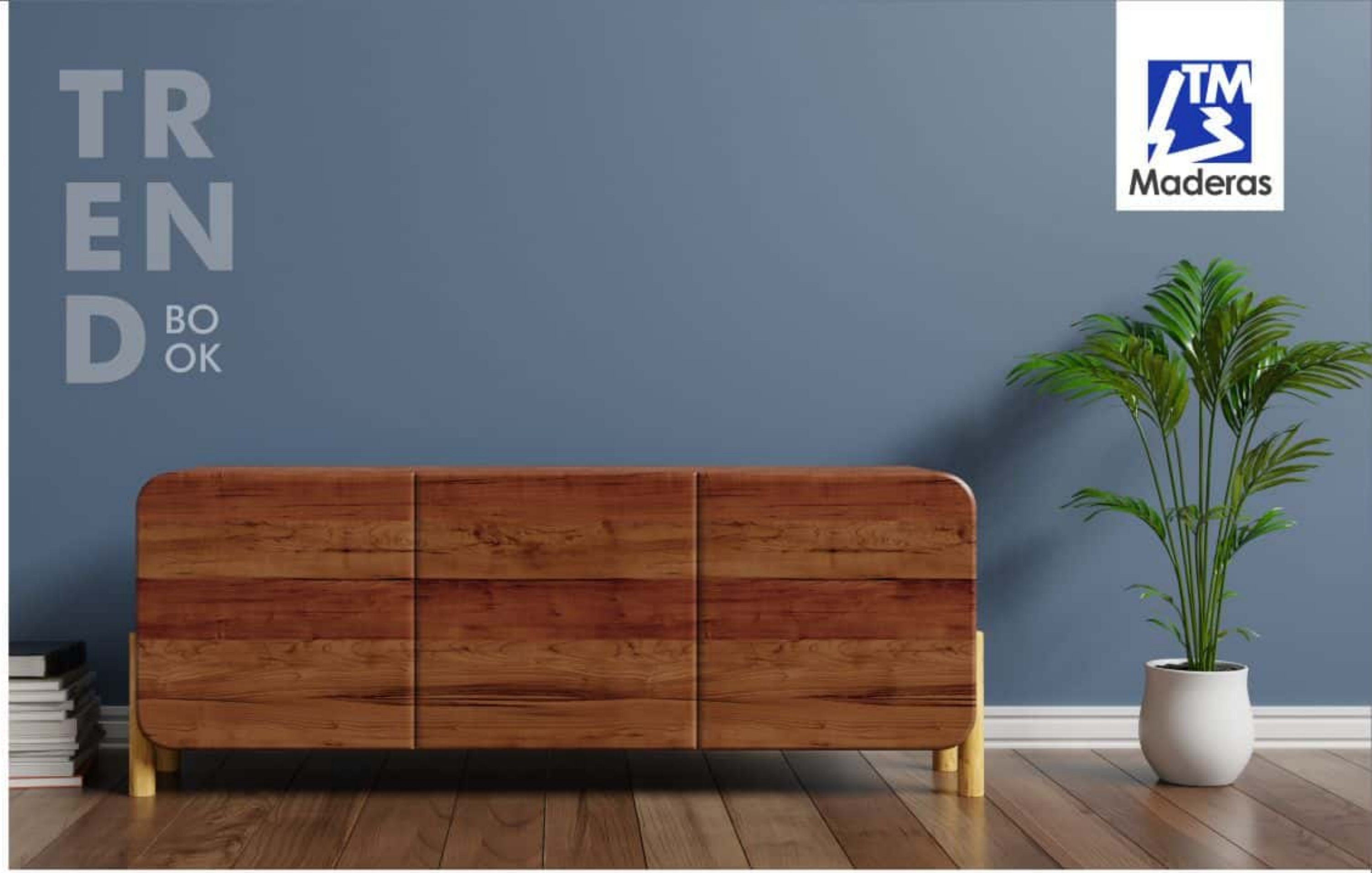
TR
EN
D BO
OK



Touch



3134 TO ITALIAN ALDER



TREND BOOK



Lamin Art



10101 MF SILVER FOIL



1002 TO OFF WHITE



3048 TO ROUGH WOOD - BROWN



3253 FW NATURAL WOOD - III



3257 SC PRUNUS - II



3247 FW GOLDEN NUT



3232 FW KEVASINGO TEAK



3333 SC DISTRESSED GREY WOOD



3344 SC DISTRESSED DARK WOOD





3327 HZ LP LATVIA OAK - II



3328 HZ LP LATVIA OAK - III



3317 HZ LP ASH NATURAL



3314 HZ LP MOROCCAN WOOD - TEAK





3338 VW FIDLED ANEGRE - III



3336 VW FIDLED ANEGRE - I

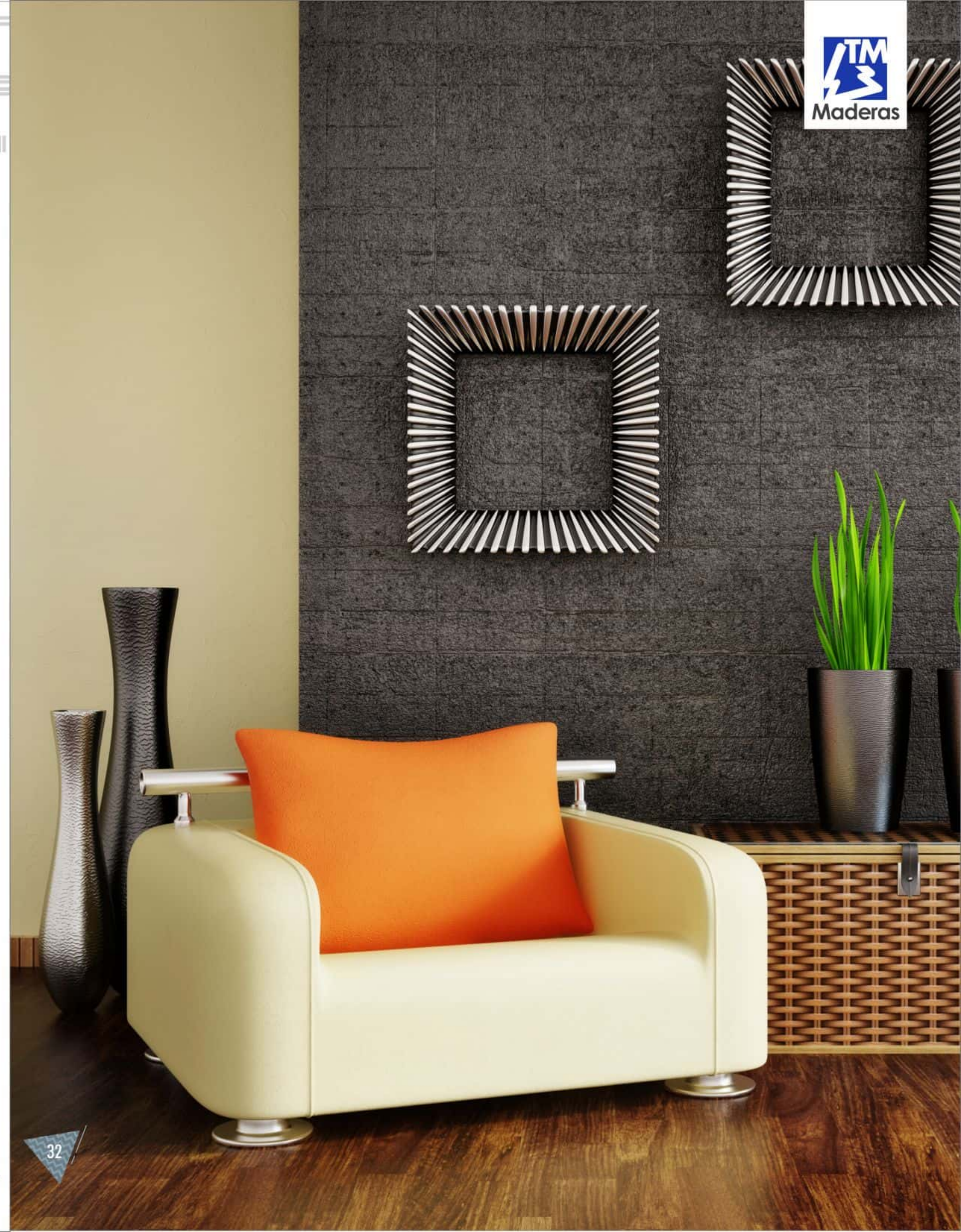


3337 VW FIDLED ANEGRE - II





3090 RE16 ENGLISH WALNUT





3092 RE16 DARK WALNUT



3159 RE22 MARBELLO GRISEO



3084 TYROL OAK





Synchronic Plus +

3082 RE16 PINUS JEFFREYI



3080 RE5 EXOTIC NATURAL WOOD



Technical Specification of High Pressure Laminate Sheet

Properties	Specified as per IS:2046- 1995	Trend Book's Typical Values
Thickness	1.00 mm (+/-10%)	1.00 mm (+/-0.05%)
Resistance to surface wear	350 Revolutions Min.	>350 Revolutions
Resistance to immersion in boiling water		
Mass increase (%)	10.0% (Max.)	5.0% (Max.)
Thickness increase (%)	11.8% (Max.)	6.0% (Max.)
Resistance to dry heat at 180° C	Should pass test	Passes
Dimensional Stability at elevated temperature		
Longitudinal (%)	0.55% (Max.)	0.45% (Max.)
Transverse (%)	1.025% (Max.)	0.85% (Max.)
Dimensional Stability at 20° C		
Longitudinal (%)	0.375% (Max.)	0.285% (Max.)
Transverse (%)	0.60% (Max.)	0.50% (Max.)
Resistance to impact by small diameter ball	20 N (Min.)	25 N (Min.)
Resistance to cracking	Should pass test	Passes comfortably
Resistance to scratching	2 N (Min.)	3 N (Min.)
Resistance to staining	Should pass test	Passes all tests
Resistance to color change	Wool Standard	
1.In Xenon light	Should pass test	Passes
2.In enclosed carbon arc light	Should pass test	Passes
Resistance to cigarette burns	Should pass test	Passes
Resistance to steam	Should pass test	Passes
Appearance	No ABC defects	No ABC defects
Specific Gravity gm/cm ³		(1.35 Min.)

Suggested application areas

Segment	Residential	Commercial	Hospitality	Retail
Category	Home Guest House	Office	Hotels Health Hospital	Big Retail Brand Outlet
Usage Area	Kitchen Bar/ Dining Room Lounge	Reception / Conference Hall	Reception/ Restaurant/ Bar/ Café/ Gym & Spa Reception/ Clinic/ Lab	Display unit

INSTRUCTIONS:

- All designs are available in the standard size of 2440mm x 1220mm.
- The samples fixed in this folder only represents the design, colour and finishes, but not actual thickness.
- Keep laminate sheet away from direct sunlight, as is meant for indoor application.
- The product must be inspected prior to installation.
- All products of Amulya Mica are free of manufacturing defects for 7 years and are suitable for use under normal conditions. In case of any claims, the liability of the company is however, limited to the cost of the product only.



PRODUCT RANGE

High Pressure Decorative Laminate
PVC Lead Free 90° Bendable Laminate
Metal Foil Laminate
Scratch Resistant Laminate (Amulya Plus)
Amulya Mica Metallic Door Guard
High End Exclusive Collection(7 Wonders)
Fire Retardant Exterior Grade Compact Laminate
Digital Laminate

Synchronized Laminate
Post Forming Laminate
Industrial Compact Laminate
Unicore
Liner Grade
Chalk Board
Marker Board
Black Board
WPC Lead Free Board
PVC Lead Free Board



Technical Specification of Scratch Resistant Laminate

Property	Property / Attributes	Unit (Max/ Min)	As Per STD	Trend Book Value
Resistance to Surface wear	Wear resistance	Revolution (min) wear value	350	>700
Resistance to impact by small diameter ball	Spring force	N (min)	20	>20
Resistance to impact by large diameter ball (optional)	Drop height indent diameter	mm (min) mm (max)	800 10	>800
Resistance to scratching	Force	Rating	2	>3
Dimensional Stability at elevated temperature	Cumulative dimensional change	% (max) La Tb	<0.55 <1.05	>0.45 >0.95
Resistance to immersion in boiling water	Appearance	Degree (min)	3	>3
Resistance to dry heat at 180° C	Appearance	Degree (min)	3	>3
Resistance to staining	Appearance	Rating (min)	5	>5
Light Fastness (Xenon Arc)	Contrast	Wool Std Rating	5	>6
Resistance to water vapor	Appearance	Rating (min) Gloss Finish	4	>4
Resistance to cigarette burns	Appearance	Rating (min)	3	>3
Resistance to cracking under stress	Appearance	Rating (min)	4	>4